

▶ STEMCO Remote Sensing Thermostats

351 Series

High-quality bulb & capillary thermostats engineered for applications such as commercial food equipment and HVAC applications, that require tight tolerances & close calibration at the desired temperature.

The STEMCO 351 series bulb and capillary thermostats are our most versatile. The series is available in several variations, including fixed and adjustable models with auto or manual reset. Numerous mounting options, bulb materials, and switch configurations enhance its adaptability.

The screwdriver adjustment model with its front connect terminals is perfect for warming ovens, deep fat fryers, and commercial water heaters.

The D-Shaft adjustable model allows for easy installation of a knob, making it ideal for applications such as convection ovens, charbroilers, dishwashers, grills, electric toasters and toaster ovens.

The fixed setting model is used when no user adjustment is desired, such as for safety limits.

The 351 series offers numerous mounting options that allow for simple replacement of competitor's thermostats.

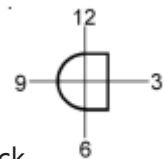
Every 351 thermostat is built to customer specifications. This ensures that you get the exact control you want without paying for features you don't need.

- Calibration temperature range of -40°F to 700°F
- Maximum ambient temperature of 250°F, optional ambient compensation available.
- Adjustable or Fixed Temperature Range options available
- Screwdriver or D-Shaft Adjustment.
- Automatic or Manual Reset
- SPDT Switch Action
- Rated for 15-25 Amps at 100,000 cycles
- Variety of capillary diameters and lengths available.
- Side, panel or back mounting options with front terminal locations. Housing optional, see boiler controls.
- Variety of Bulb & Capillary material options including, copper, dull nickel-plated copper, one piece stainless steel or two piece stainless steel.
- Variety of dial rotations available including 0°, 120°, 137°, 180° or 270°.

Specify orientation with terminals facing up.
Turn shaft fully counter clockwise:

- 12 O'Clock
- 3 O'Clock
- 6 O'Clock
- 9 O'Clock

Flat shown at 3 O'Clock

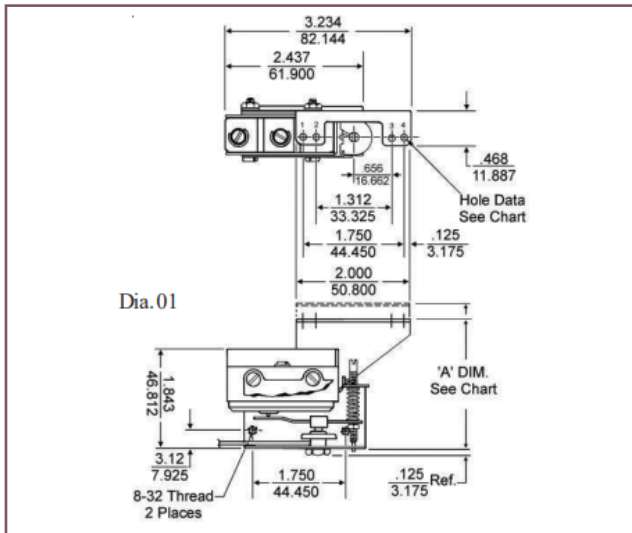


Flip for complete fact sheet. >>>

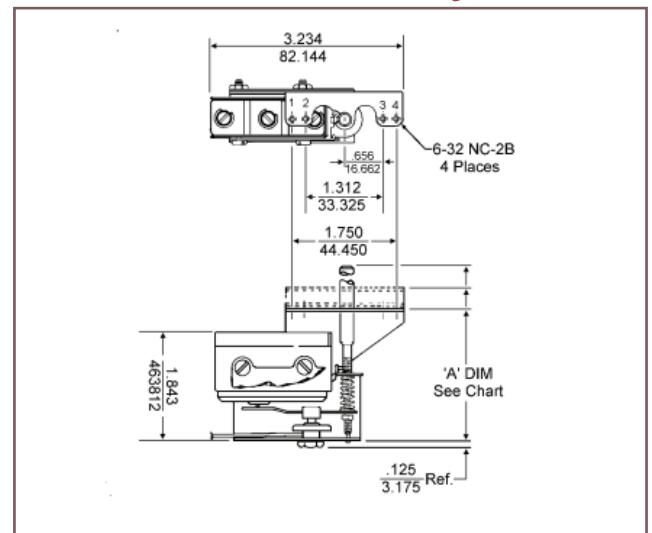
351 Dimensional Drawings

Front mounting bracket options. Most brackets are interchangeable. All dimensions inches/millimeters.

Auto Reset, Screwdriver Adjustment



Auto Reset, D-Shaft Adjustment



351 Front Mounting Bracket - 4 Hole, Large Opening Options

Bracket	'A' Dim.	Hole #1	Hole #2	Hole #3	Hole #4
351-30-5001	2.546" / 64.668mm	0.104"D / 2.642mm	0.104"D / 2.642mm	0.104"D / 2.642mm	0.104"D / 2.642mm
351-30-5002	2.546" / 64.668mm	6-32 Thread	0.104"D / 2.642mm	0.104"D / 2.642mm	6-32 Thread
351-30-5003	2.546" / 64.668mm	0.104"D / 2.642mm	6-32 Thread	6-32 Thread	0.104"D / 2.642mm
351-30-5122	2.531" / 64.287mm	6-32 Thread	0.104"D / 2.642mm	0.104"D / 2.642mm	6-32 Thread

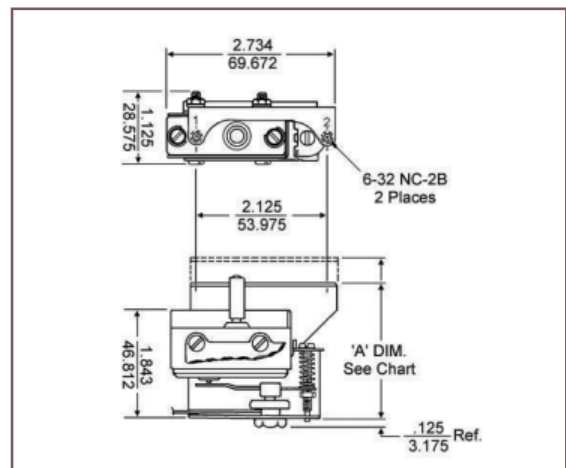
351 Front Mounting Bracket with Shaft Stabilizer

Bracket	'A' Dim.	Hole #1	Hole #2	Hole #3	Hole #4
351-30-5022	2.546" / 64.668mm	All holes 6-32 UNC-2B Thread			
351-30-5023	2.265" / 57.531mm	All holes 6-32 UNC-2B Thread			
351-30-5024	5.171" / 55.143mm	All holes 6-32 UNC-2B Thread			

Fixed Setting Model with Manual Reset

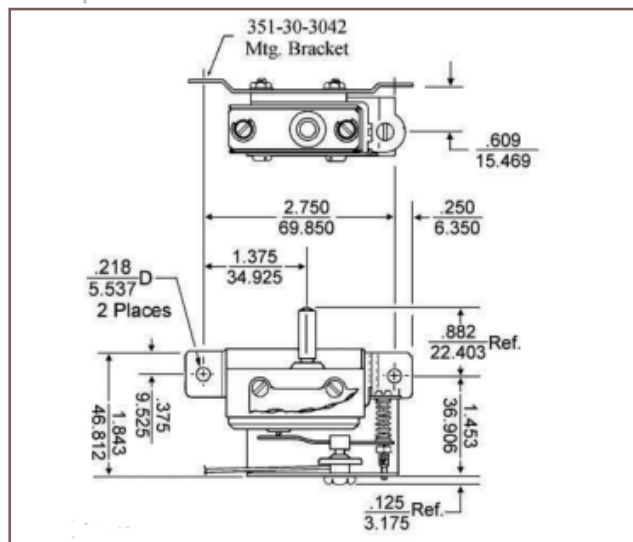
351 Front Mounting Bracket - 2 Large Hole Opening

Bracket	'A' Dim.	Hole #1	Hole #2
351-30-5042	2.546" / 64.668mm	6-32 Thread	6-32 Thread
351-30-5062	2.265" / 57.531mm	6-32 Thread	6-32 Thread



Side and bottom mounting bracket options. All dimensions inches/millimeters.

Flat Side Mounting Bracket, Fixed Setting, Manual Reset



351 Side Mounting Bracket with Standoff

Bracket	Hole #1	Hole #2
351-30-3042	0.218" / 5.537mm	0.218" / 5.537mm

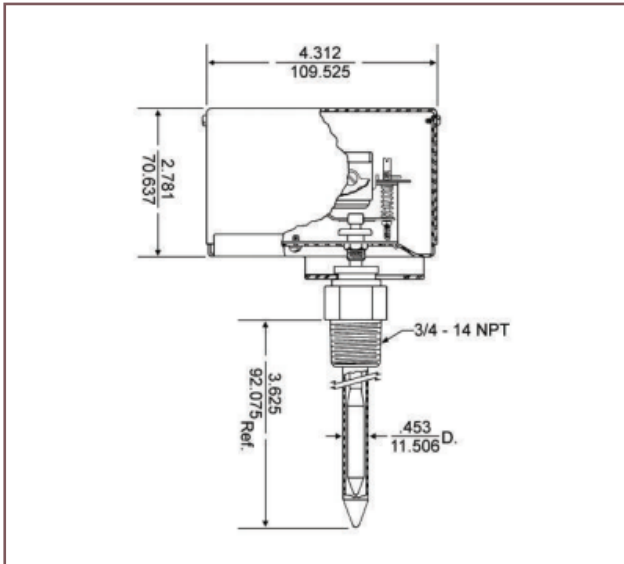


Bracket	Hole #1	Hole #2
351-30-3002	0.152" / 3.861mm	0.152" / 3.861mm

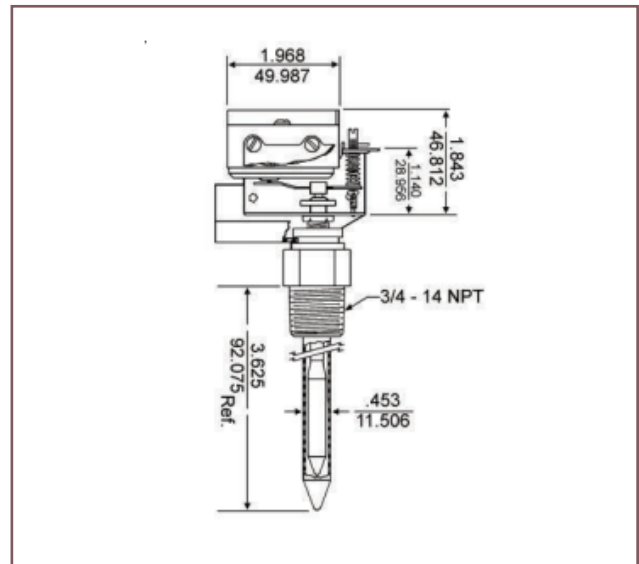
351 Dimensional Drawings

Boiler Controls and Probes. All dimensions inches/millimeters.

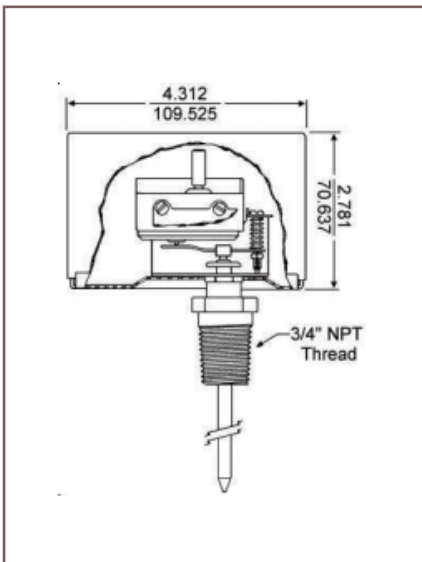
351 Boiler Control with Adjustable Temperature Setting and Auto Reset. Shown with thermowell and housing.



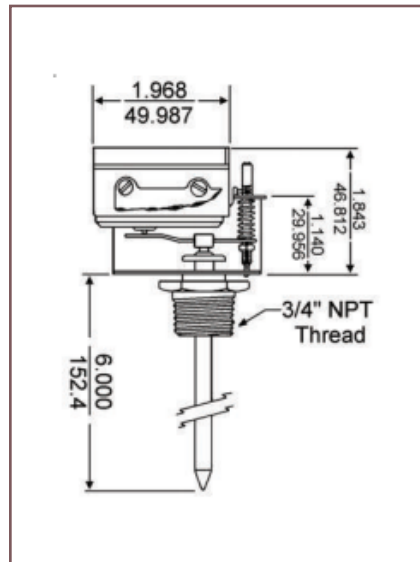
351 Boiler Control with Adjustable Temperature Setting and Auto Reset. Shown with thermowell.



351 Probe with Fixed Temperature Setting and Manual Reset. Shown with 3/4" Fitting and Housing.



351 Probe with Adjustable Temperature Setting and Auto Reset. Shown with 3/4" Fitting.



351 Probe with Fixed Temperature Setting and Auto Reset. Shown with 7/16"-24 Loxit Fitting. (Not Standard)

