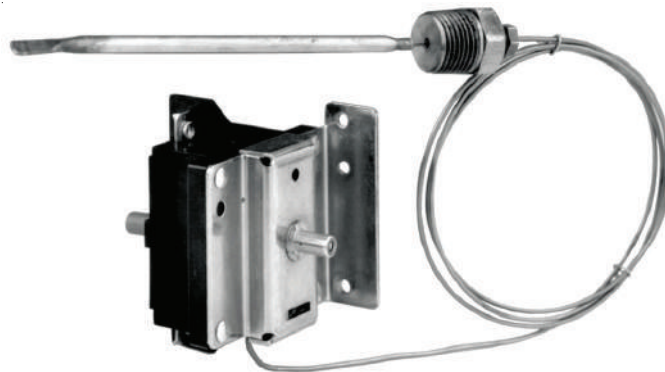


STEMC 355 Fixed Temp., DPST Remote Sensing Thermostat



355 Series

Product Data:

The 355 series of Bulb & Capillary thermostats feature a fixed temperature, manual reset design that is available as a double pole, single throw device. The double pole design allows for both poles of the thermostat to open simultaneously.

It is the snap disc construction of the 355 that assures positive simultaneous break of both poles. Each pole is independently rated at 48 Amps Resistive at 240 VAC. The control will break both sides of a 240 VAC line of a 11.5KW resistive load.

The Trip Free construction, has an "M2" rating, which may be required when used as a safety limit.

The 355 thermostats can be used for a variety of applications including safety limit for SPAs, boilers, and commercial water heaters.

Ambient compensation is a standard feature on the 355 thermostats, meaning that the calibration will not be effected by ambient temperature surrounding the thermostat body, as long as it doesn't exceed the maximum ambient of 150°F.

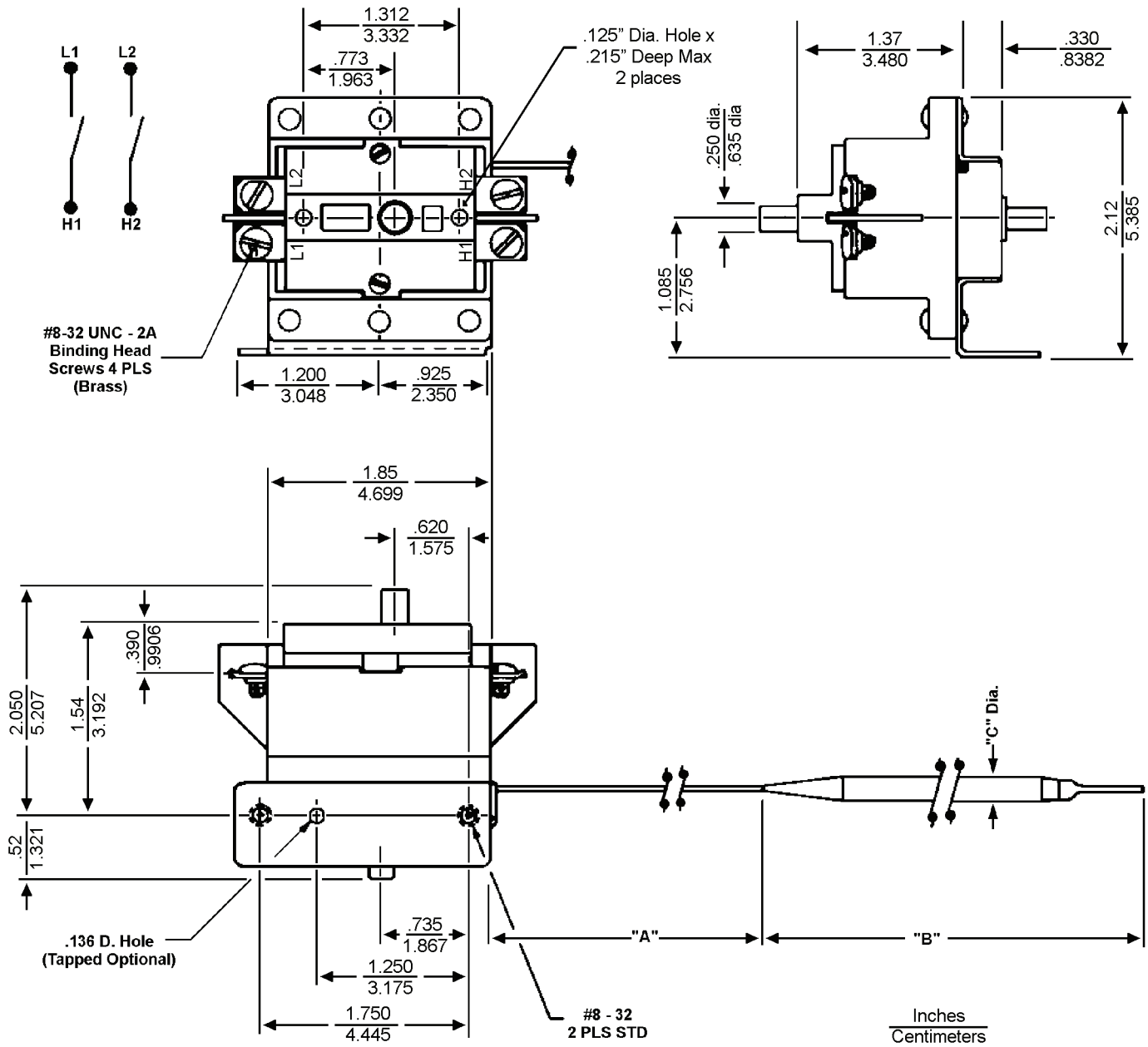
355 Features:

Calibration Range:	0°F-230°F
Range Options:	Fixed Temperature
Reset Options:	Manual Reset
Switch Action:	DPST
Switch Ratings:	48 Amps per Pole
Mounting Options:	Panel or Side Mount
Housing:	N/A
Terminal Location:	Front
Maximum Ambient:	150°F
Compensation:	Ambient (standard)

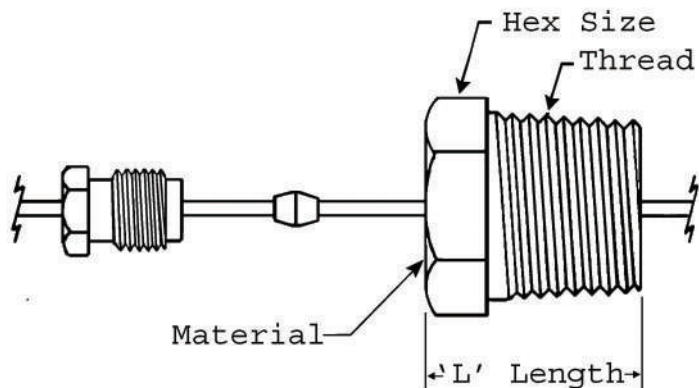
Additional Options:

Bulb & Capillary:	Copper, Nickel Plated Copper, One Piece Stainless Steel or Two Piece Stainless Steel.
Bulb Supports and Fittings:	Brass, Nickel Plated Brass, & Stainless Steel. See page 8.

STEMC055 Series Dimensional Drawings

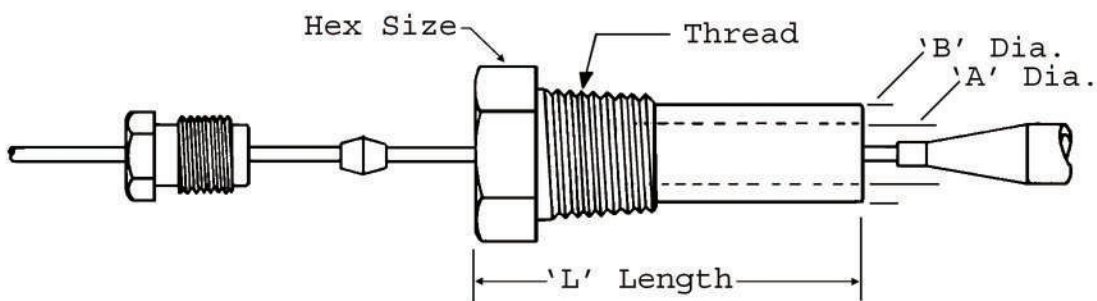


STEMO Fittings & Bulb Supports



Standard Fittings

Thread	Material	Hex Size	'L' Length	Finish	Part #
1/8 NPT	Brass	7/16"	.625"	None	368-67-03061
1/8 NPT	S-Steel	7/16"	.625"	None	368-67-03023
1/4 NPT	Brass	5/8"	.750"	None	368-67-03201
1/4 NPT	Brass	5/8"	.750"	Nickel Plate	368-67-03202
1/4 NPT	S-Steel	5/8"	.750"	None	368-67-03161
3/8 NPT	Brass	11/16"	.750"	None	368-67-03001
3/8 NPT	Brass	11/16"	.750"	Bright Nickel	368-67-03001P
3/8 NPT	S-Steel	11/16"	.750"	None	368-67-03002
1/2 NPT	Brass	7/8"	.875"	None	368-67-03101
1/2 NPT	Brass	7/8"	.875"	Bright Nickel	368-67-03102
1/2 NPT	S-Steel	7/8"	.875"	None	368-67-03103



Bulb Support Fittings

Thread	Material	Hex Size	'L' Length	'A' Dia.	'B' Dia.	Finish	Part #
1/4 NPT	Brass	5/8"	1.620'	.257'	.390'	None	368-67-03241
1/4 NPT	S-Steel	5/8"	1.620'	.147'	.390'	None	368-67-03242
1/4 NPT	S-Steel	5/8"	1.620'	.257'	.390'	None	368-67-03243
1/2 NPT	S-Steel	7/8"	1.372'	.257'	.315'	None	368-67-03261

STEMC055 Series Quote Request

Customer: _____ QR#: _____
 Attn: _____ Date: _____
 Address _____ Cust#: _____
 City _____ State: _____ Zip: _____
 Tel: _____ Fax: _____
 Email: _____
 Salesman: _____ Agency #: _____

Send Quote to: Customer: _____ Rep Agency _____ (Check one or both)

Application: _____
 Comments: _____

Est. Yearly Qty: _____ Target Cost: _____

Control: Max. Exposed Temp.: _____ °F. Load _____ Amps. Voltage: _____ AC, or DC _____
 Load Resistive _____, or Inductive _____, Terminals: Screws _____

Fixed: Open Temp: _____ °F.

Bulb: Maximum Exposed Temp.: _____ °F Max Length: _____" Max Dia. _____"
 What is Probe _____, or Bulb _____, Immersed into: _____

Capillary: Material: Copper _____, Nickel Plated Copper _____, 1 Pc Stainless Steel _____, or
 2 Pc Stainless Steel _____, Length _____" Max Exposed Temp. _____ °F

The following are available options: Select all that apply.

1/8": 368-67-30061 _____, 368-67-03023 _____
 NPT Fittings: 1/4": 368-67-03201 _____, 368-67-03202 _____, 368-67-03161 _____
 Page 3 3/8": 368-67-03001 _____, 368-67-03001P _____, 368-67-03002 _____
 1/2": 368-67-03101 _____, 368-67-03102 _____, 368-67-03103 _____
 NPT Supports: 1/4": 368-67-03241 _____, 368-67-03242 _____, 368-67-03243 _____
 Page 3 1/2": 368-67-0326 _____

Fax Quote Request to Customer Service: 419-818-0897