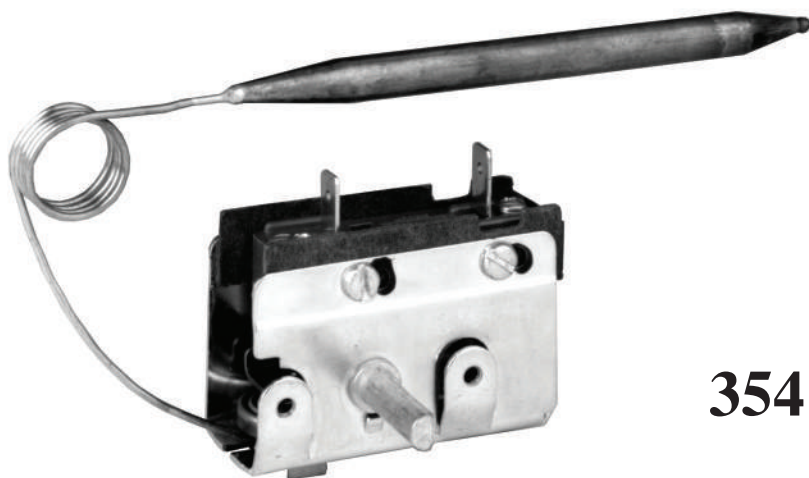


STEMC 354 SPDT Auto-Reset Remote Sensing Thermostat



354 Series

Product Data:

The 354 series Bulb & Capillary thermostat is specifically designed for applications that require tight tolerances and close calibration at the desired nominal temperature set point. The adjustable shaft of the 354 control is a "through shaft" design that extends through the control providing a smooth rotating operation assuring repeatability of the set point through the entire dial rotation.

The control lever is positively positioned by tabs that encircle the shaft to eliminate rocking motions inherent in some thermostats' designs. The side mounting allows the 354 to be installed in areas with very limited depth.

The SPDT switch action allows for break on temperature rise or temperature fall. The 354 series is available with optional ambient compensation to offset the impact on calibration caused by the thermostat body being installed in high ambient locations.

The 354 thermostat can be used for a wide variety of control functions including: spas, pool heaters, wall heaters, portable and unit heaters, heat pumps, fans, domestic and commercial ranges, food service equipment and others.

354 Features:

Calibration Range:	0°F-675°F
Range Options:	Adjustable or Fixed
Reset Options:	Automatic
Switch Action:	SPDT
Switch Ratings:	15-25 Amps
Mounting Options:	Side Mount
Housing:	N/A
Terminal Location:	Top
Maximum Ambient:	150°F

Additional Options:

Adjustable Shafts:	D Shaft
Compensation:	Ambient (optional)
Bulb & Capillary:	Copper, Nickel Plated Copper, One Piece Stainless Steel or Two Piece Stainless Steel

Shaft:

Specify at location in ° position. Terminals up.

Turn shaft fully counterclockwise

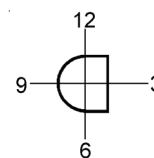
12 O'clock

3 O'clock

6 O'clock

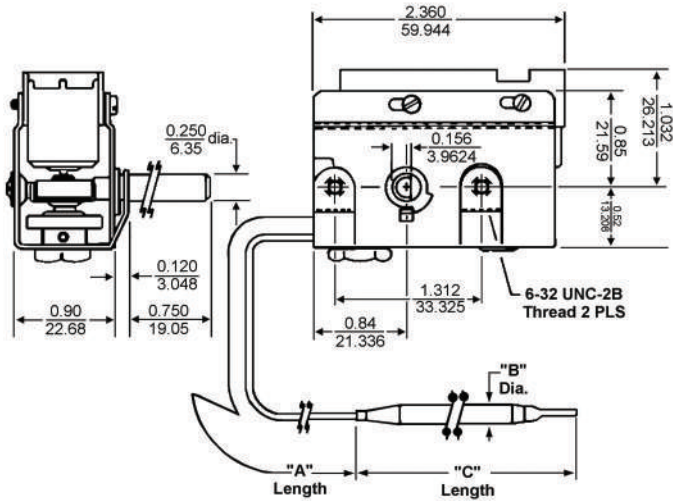
9 O'clock

Flat shown at 3 O'clock



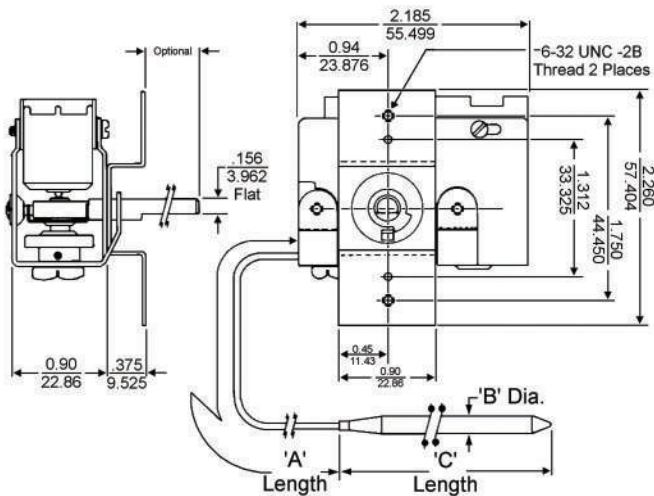
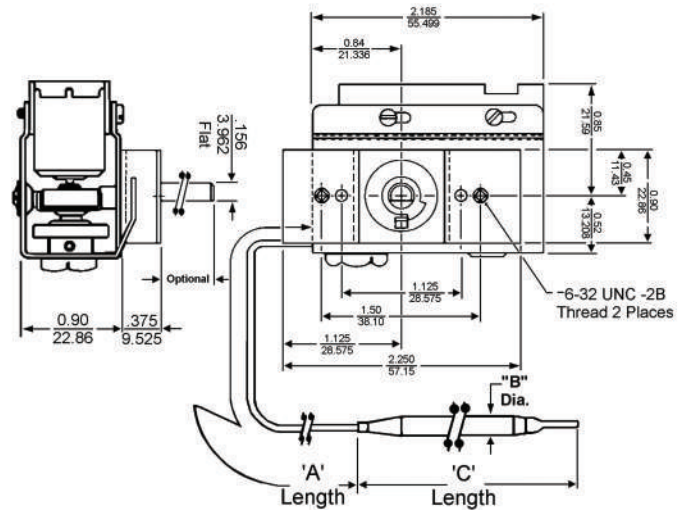
STEMCO 354 Dimensional Drawings

'A' and 'C' lengths per customer's specifications.



354 shown with standard side mount, and 0.250" diameter D-shaft. The D-shaft is shown positioned at 3 O'Clock at the high stop setting (fully counterclockwise).

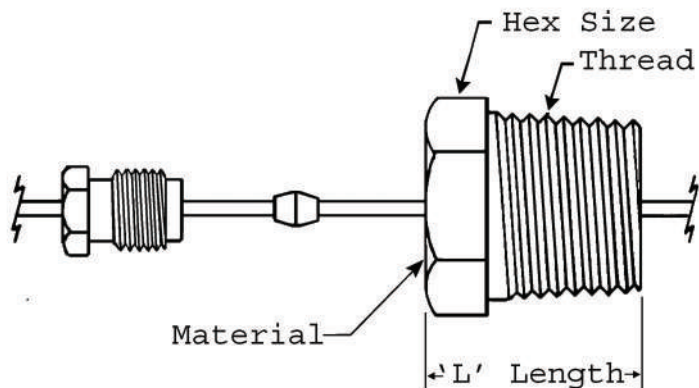
354 shown with optional side mount and optional spacer. The D-shaft is 0.156" diameter. The D-shaft is shown positioned at 6 O'Clock at the high stop setting (fully counterclockwise).



354 shown with optional side mount bracket. The shaft is 0.156" diameter. The DShaft is shown positioned at 6 O'Clock at high stop setting (fully counterclockwise).

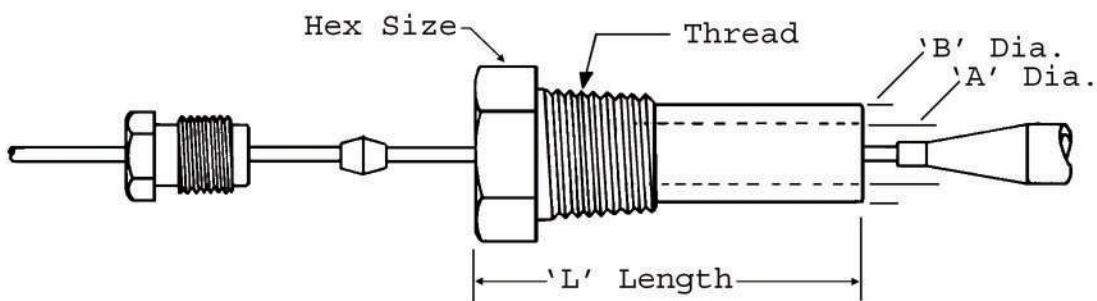
All dimensions inches/millimeters.

STEMO Fittings & Bulb Supports



Standard Fittings

Thread	Material	Hex Size	'L' Length	Finish	Part #
1/8 NPT	Brass	7/16"	.625"	None	368-67-03061
1/8 NPT	S-Steel	7/16"	.625"	None	368-67-03023
1/4 NPT	Brass	5/8"	.750"	None	368-67-03201
1/4 NPT	Brass	5/8"	.750"	Nickel Plate	368-67-03202
1/4 NPT	S-Steel	5/8"	.750"	None	368-67-03161
3/8 NPT	Brass	11/16"	.750"	None	368-67-03001
3/8 NPT	Brass	11/16"	.750"	Bright Nickel	368-67-03001P
3/8 NPT	S-Steel	11/16"	.750"	None	368-67-03002
1/2 NPT	Brass	7/8"	.875"	None	368-67-03101
1/2 NPT	Brass	7/8"	.875"	Bright Nickel	368-67-03102
1/2 NPT	S-Steel	7/8"	.875"	None	368-67-03103



Bulb Support Fittings

Thread	Material	Hex Size	'L' Length	'A' Dia.	'B' Dia.	Finish	Part #
1/4 NPT	Brass	5/8"	1.620'	.257"	.390'	None	368-67-03241
1/4 NPT	S-Steel	5/8"	1.620'	.147"	.390'	None	368-67-03242
1/4 NPT	S-Steel	5/8"	1.620'	.257"	.390'	None	368-67-03243
1/2 NPT	S-Steel	7/8"	1.372'	.257"	.315'	None	368-67-03261

STEMC054 Series Quote Request

Customer: _____ QR#: _____
 Attn: _____ Date: _____
 Address _____ Cust#: _____
 City _____ State: _____ Zip: _____
 Tel: _____ Fax: _____
 Email: _____
 Salesman: _____ Agency #: _____
 Send Quote to: Customer: _____ Rep Agency _____ (Check one or both)

Application: _____
 Comments: _____

Est. Yearly Qty: _____ Target Cost: _____

Control: Max. Exposed Temp.: _____ °F. Load _____ Amps. Voltage: _____ AC, or DC _____
 Load Resistive _____, or Inductive _____, Terminals: Screws _____ or 1/4" QC _____
 Automatic Reset _____, Is O Required? Yes _____, or No _____

Fixed: Open Temp: _____ °F

Adjustable: High Temp: _____ °F, Low Temp: _____ °F.
 Calibrate at: High Stop: _____, Mid Point: _____
 Shaft Selection: D-Shaft (for Knob) _____, Screw Driver _____,
 Stem Height: _____" Diameter: _____"
 D-Shaft - Flat Dimension: _____" Flat Position: _____ O'clock
 Note: When specifying a D-Shaft, the O'clock at position is determined with the shaft fully rotated counterclockwise, and with the terminals facing up.

Bulb: Maximum Exposed Temp.: _____ °F Max Length: _____" Max Dia. _____"
 What is Probe _____, or Bulb _____, Immersed into: _____

Capillary: Material: Copper _____, Nickel Plated Copper _____, 1 Pc Stainless Steel _____, or
 2 Pc Stainless Steel _____, Length _____" Max Exposed Temp. _____ °F

The following are available options: Select all that apply.

Side Mount: Standard Side Mount: _____
 Page 2 Optional Side Mount with Optional Spacer: _____
 Optional Side Mount: _____

NPT Fittings: 1/8": 368-67-30061 _____, 368-67-03023 _____
 Page 3 1/4": 368-67-03201 _____, 368-67-03202 _____, 368-67-03161 _____
 3/8": 368-67-03001 _____, 368-67-03001P _____, 368-67-03002 _____
 1/2": 368-67-03101 _____, 368-67-03102 _____, 368-67-03103 _____

NPT Supports: 1/4": 368-67-03241 _____, 368-67-03242 _____, 368-67-03243 _____
 Page 3 1/2": 368-67-0326 _____

Fax Quote Request to Customer Service: 419-818-0897